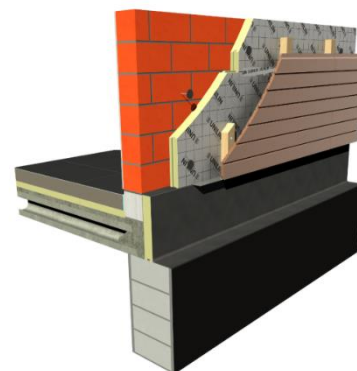
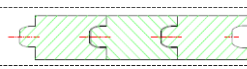


# UTHERM Wall Flex PIR L



UTHERM Wall Flex PIR L is a high performance rigid PIR insulation board faced, both sides, with a gastight aluminium composite foil facing. Utherm Wall Flex PIR L is equipped at one side with a layer of 2,5cm mineral wool.

## Product characteristics

<b>Facing</b>	L: gastight aluminium composite foil facing
<b>Isolatiekern</b>	PIR (polyisocyanuraat)
<b>Randafwerking</b>	Tongue and groove on 4 sides 
<b>Afmetingen</b>	1200 mm x 600 mm
<b>Thermal conductivity : <math>\lambda_D</math> according to EN13165: 2015</b>	PIR: 0,022 W/mK Mineral wool: 0,037 W/mK
<b>Compression strength at 10% deformation: CS(10/Y)150 according to EN826</b>	$\geq 150$ kPa (1,5 kg/cm <sup>2</sup> ).
<b>Tensile strength perpendicular</b>	TR80 $\geq 80$ kPa
<b>Dimensional stability</b> 48h, 70°C, 90%RV 48h, -20°C	DS(70,90)3: $\Delta e_{l,b} \leq 2$ / $\Delta e_d \leq 6$ DS(-20,-)1: $\Delta e_{l,b} \leq 1$ / $\Delta e_d \leq 2$
<b>Deformation under pressure and temperature</b>	DLT(2) $\leq 5\%$
<b>Density PIR foam</b>	32kg/m <sup>3</sup> $\pm 3$ kg/m <sup>3</sup>
<b>Vapour diffusion resistance factor PIR foam (<math>\mu</math>)</b>	50-100
<b>Reaction to fire</b>	F (EN 13501-1)

## Product range

Thickness [mm]	R <sub>D</sub> -value [m <sup>2</sup> K/W]
40 + 25	2,45
50 + 25	2,90
60 + 25	3,40
70 + 25	3,85
82 + 25	4,40
92 + 25	4,95
100 + 25	5,20
120 + 25	6,10
140 + 25	7,00
160 + 25	7,90

Some thicknesses may be subject to minimum order quantities. Please contact UNILIN division insulation for more information about availability.

Utherm Wall PIR L insulation boards come with an CE-mark

